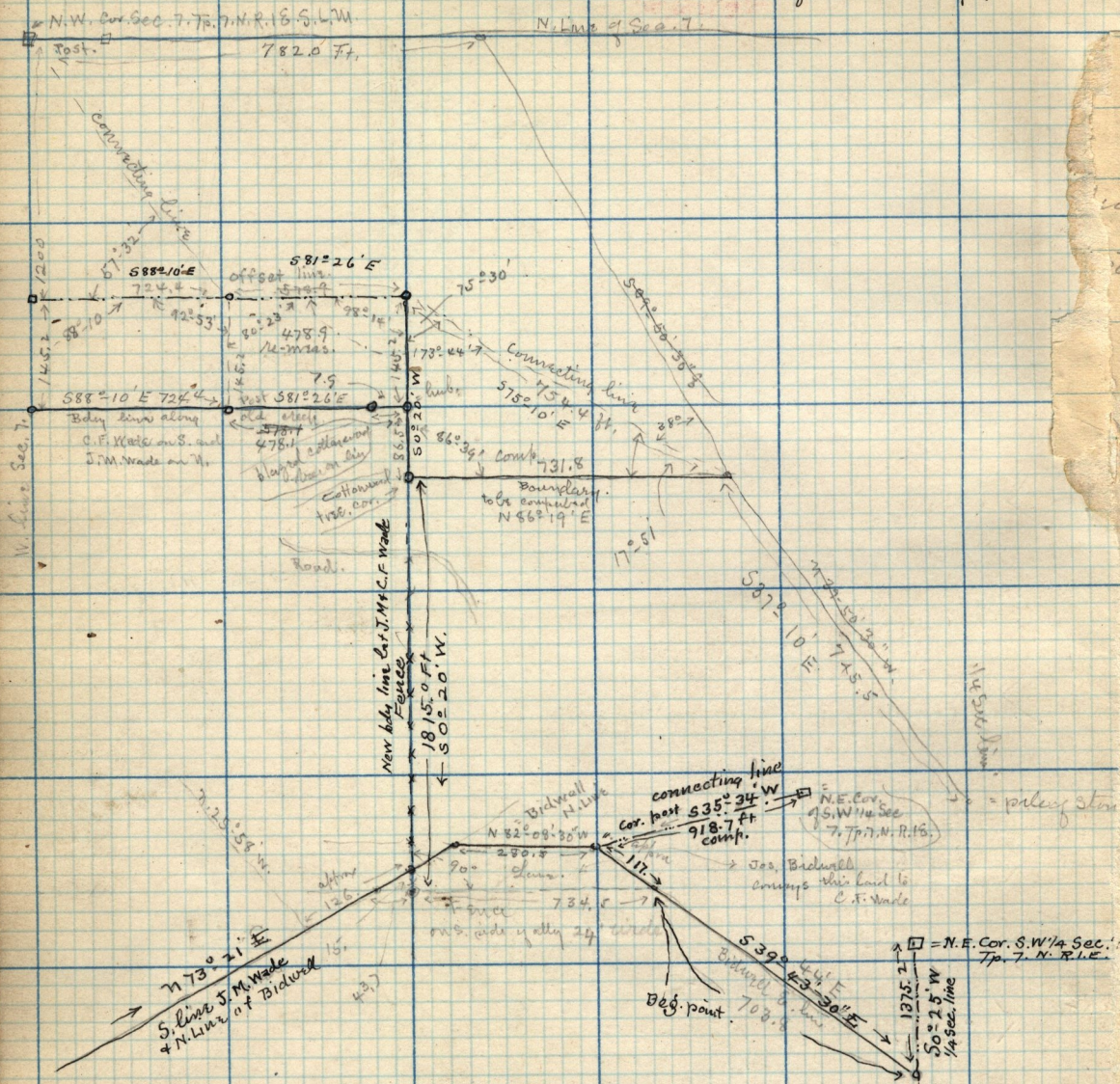


Notes of Survey for Wade Tract, in Sec. 7, Tp. 7, N-R. 1, E, S.L. Mer.

J.M. Wade sells his land to Ed. Shaw,

See plat Book - page 133,

See field Book K - page 136



Dec. 19-02

Description of tract of land to be conveyed by Jos. Bidwell to J.M. Wade as surveyed above. Pt. S.W. 1/4 Sec. 7, Tp. 7, N-R. 1, E. - Beg. at a point 1375.2 ft. S 0° 25' W along 1/4 Sec. line and 703.8 feet N 39° 44' W from N.E. cor. sd 1/4 Sec. - Running thence N 39° 44' W 117.0 ft. - 7182.09' Vr. 280.5 ft. - S 73° 21' W 432.2 ft. - thence S 89° 40' E. 766.5 ft. to beg. - 1.6 a approx.

Traverse table of line shown above as an offset line beg. 1200 ft. S. of N.W. cor. of Sec. 7.

Jan'y 22-03

South	1200.0		1200.0	
S 88° 10' E	724.4		23.2	724.0
S 81° 26' E	478.9	478.9	71.3	473.5
S 75° 10' E	754.4		193.1	729.2
S 37° 10' E	745.5		594.0	450.3
N 0° 25' E	215.5			1.6
N 80° 25' W	215.5	215.5		
		1917.7		1602.0